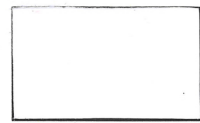


# CARAN D'ACHE

Genève

## NEOCOLOR® I

## 40 colours / couleurs / Farben



001  
white / blanc / Weiss



521  
sahara yellow / jaune sahara / Saharagelb



240  
lemon yellow / jaune citron / Zitronengelb



010  
yellow / jaune / Gelb



030  
orange / orangé / Orange



051  
salmon / saumon / Lachsrot



050  
flame red / rouge orangé / Rotorange



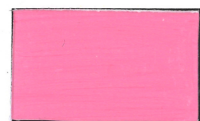
060  
Vermilion / Vermillon / Zinnoberrot



560  
light cadmium red / rouge carmin clair / Hellkadmiumrot



070  
scarlet / écarlate / Scharlachrot



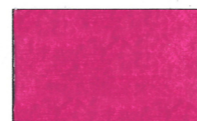
081  
pink / rose / Rosa



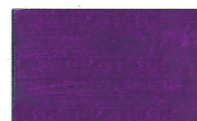
589  
crimson alizarin / alizarine cramoisie / Alizarin Karmesin



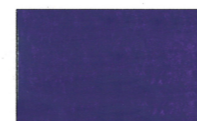
080  
carmine / carmin / Karmin



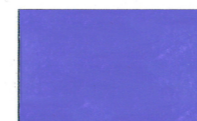
090  
purple / pourpre / Purpur



110  
lilac / lilas / Lila



120  
violet / violet / Violett



131  
periwinkle blue / pervenche / Hellviolett



640  
dark ultramarine / bleu outremer foncé / Dunkelultramarinblau



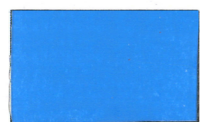
140  
ultramarine / bleu outremer / Ultramarinblau



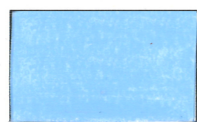
159  
prussian blue / bleu de prusse / Preussischblau



160  
cobalt blue / bleu de cobalt / Kobaltblau



161  
light blue / bleu clair / Hellblau



661  
light cobalt blue / bleu cobalt clair / Hellkobaltblau



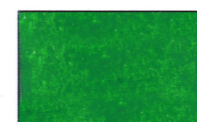
171  
turquoise blue / bleu turquoise / Türkisblau



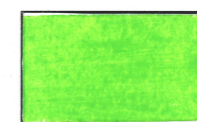
180  
malachite green / vert de malachite / Malachitgrün



210  
emerald green / vert émeraude / Smaragdgrün



220  
grass green / vert prairie / Grasgrün



230  
yellow green / vert jaune / Gelbgrün



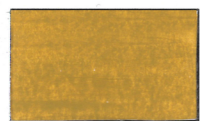
245  
light olive / olive clair / Helloliv



249  
olive / olive foncé / Dunkeloliv



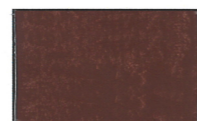
049  
raw umber / terre d'ombre / Umbra natur



035  
ochre / ocre / Ocker



065  
russet / sanguine / Rotbraun



069  
burnt Siena / sienne brulée / Siena gebrannt



059  
brown / brun / Braun



028  
toledo brown / terre de Tolède / Toledobraun



003  
light grey / gris clair / Hellgrau



005  
grey / gris / Grau



508  
payne's grey / gris de payne / Paynesgrau



009  
black / noir / Schwarz

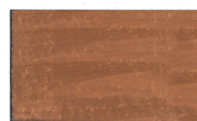
## 10 metallic colours / couleurs métalliques / metallische Farben



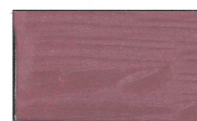
499  
gold / or / Gold



899  
dark gold / or foncé / Dunkel gold



497  
bronze / bronze / Bronze



070  
scarlet / écarlate / Scharlachrot



081  
pink metallic / rose / Rosa



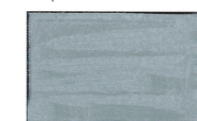
120  
violet metallic / violet / Violett



162  
phtalocyanine blue / bleu de phtalocyanine / Phtalocyaninblau



710  
phtalocyanine green / vert de phtalocyanine / Phtalocyaningrün



498  
Silver / Argent / Silber



401  
ash grey / gris cendre / Aschgrau

Range / Gamme / Reichweite : 7000.

metallic / métallique / metallische : 7004



